

We Build Each Home...



As If It Were
Our Own



Since 1980

LOG HOMES

Minnesota, Inc.

A Custom Builder With a Reputation For Outstanding Design, Quality Construction & Customer Satisfaction

ADVANTAGES of a LOG HOMES MINNESOTA HOME

OVER 1100 HOMES BUILT SINCE 1980

When shopping and comparing, please consider these fine points as to why Log Homes Minnesota may be the best builder for you.

Custom Design

We'll help you design the perfect home to meet your every need. Whether it is full log or stick-built, we begin at the blueprint stage to include features that incorporate your passions and enhance your lot. Our design service can start from scratch, one of our plans, a magazine floor plan, or a sketch on a napkin! We will keep "drawing" until your vision is realized.

Dear Steve & Crew:

Jim and I want to say "Thank You". We have worked with lots of people throughout the years and want you to know we think you are all TOPS!!! From salesmen returning our calls to a friendly secretary (who knows my voice), to your working crew - taking the time to explain, offer advice, ask questions - they are all around fantastic people. Thanks a million, it made our home more fun to watch go up.

Jim & Sharon Fearing

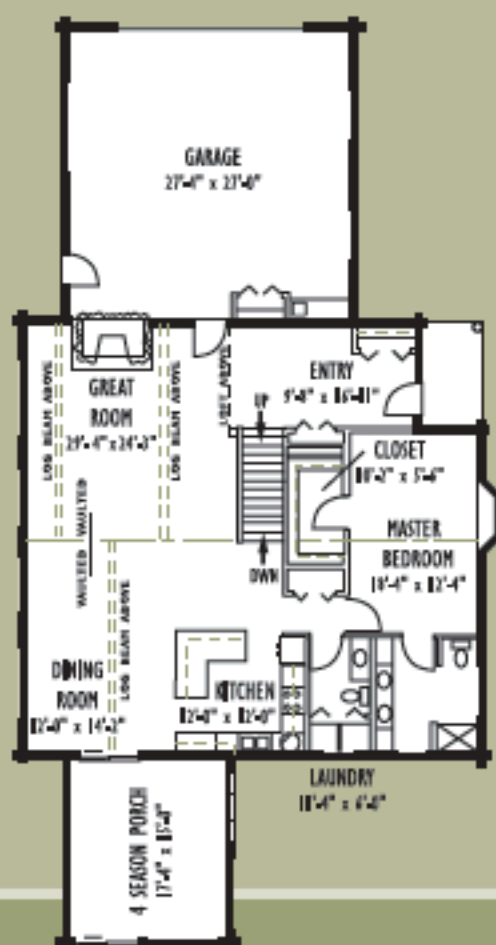
TEN MILE LAKE

Main: 2056
Loft: 1730
3786

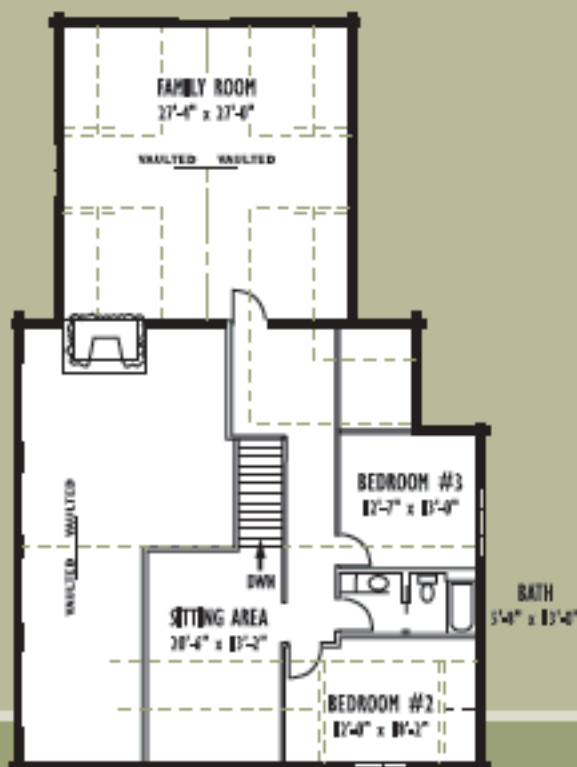
Lower: 2056
Garage: 740



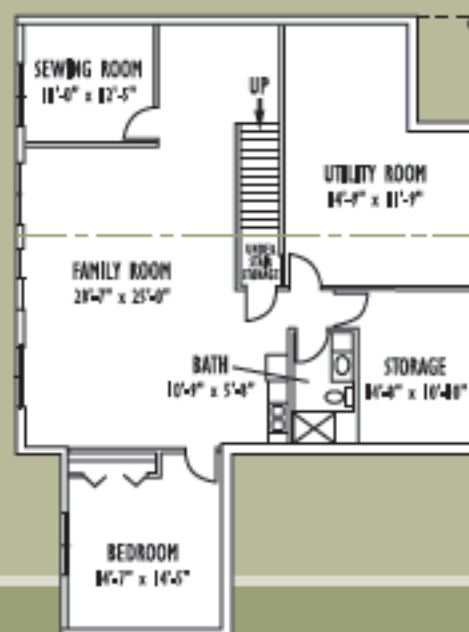
Main Level



Loft Level



Lower Level





Professional Construction with Exceptional Customer Service

Our crew strives to satisfy the customer during each and every step of the building process. We listen to the client, make recommendations, and discuss any changes that may arise during construction.

Since 1980 we've been building beautiful homes with top quality products and we plan to be here far into the future. You can count on us to provide outstanding customer service before, during, and after the construction process. We're just a phone call or email away and will answer any question concerning your new home.



KABEKONA

Main: 1540
Loft: 990
2530

Lower: 1540

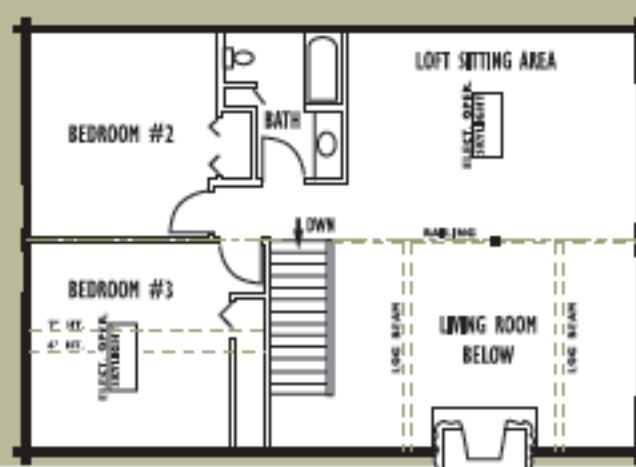
This plan is based on our office model home displayed in Walker



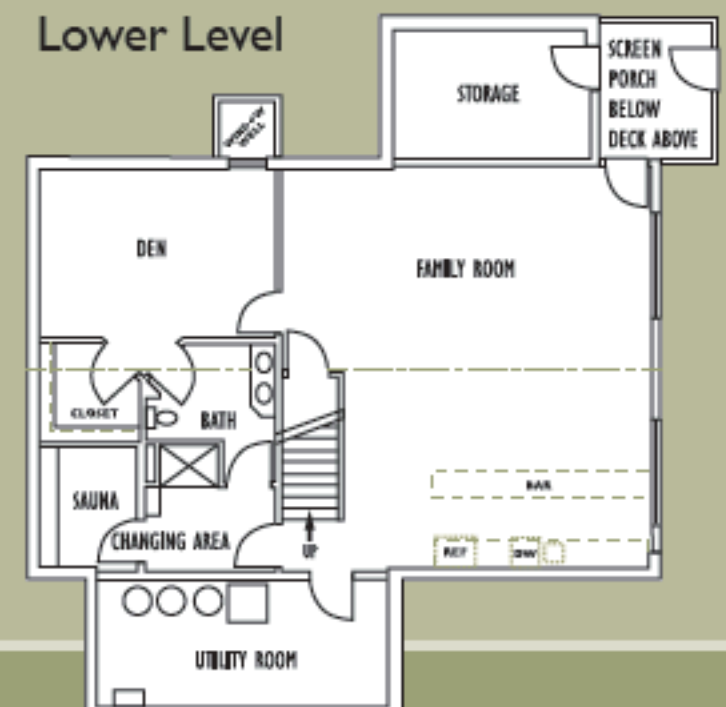
Main Level



Loft Level



Lower Level



Outstanding Crew & Owners

Our skilled carpenters have more than 100 years of collective experience and are craftsmen who enjoy every part of the building process. We pride ourselves on building each home as if it were our own. We listen, inform, and follow through with the clients' requests.

Affordable Plans to Fit Any Budget

Count on us for highly competitive pricing without sacrificing quality or craftsmanship. We pay special attention to everything from the custom-built cabinets down to the finishing trim. Our main goal is to build the home of your dreams while staying within your budget.

To Whom It May Concern,
Subject: Off-Peak Electrically Heating Homes

I have compared the average monthly electric bill for the off-peak rippled controlled system presently in the log home residence of John Melhus (A/C 70-36-058-02) with comparable homes of standard construction and find that in all instances, the log home had a lower average monthly billing.

Don Anderson
General Manager
Beltrami Electric Cooperative, Inc.
Hwy. 2 West, PO Box 448, Bemidji, MN 56601

WALKER BAY

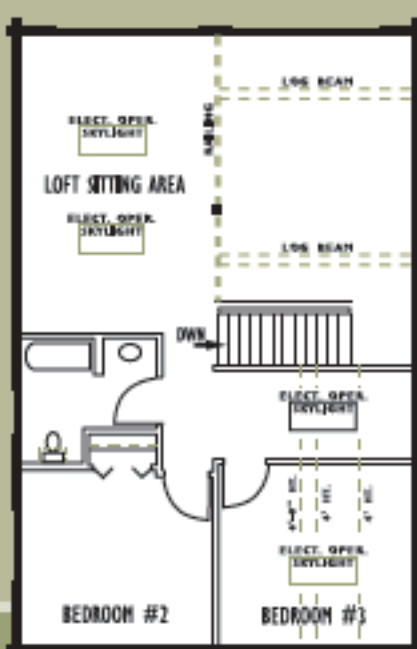
Main:	1340
Loft:	900
	<hr/> 2240
Lower:	1120



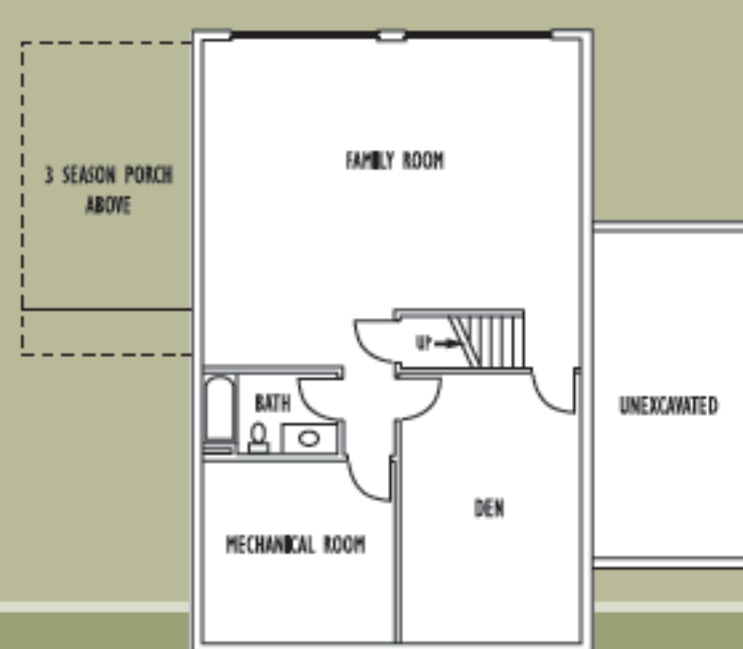
Main Level



Loft Level

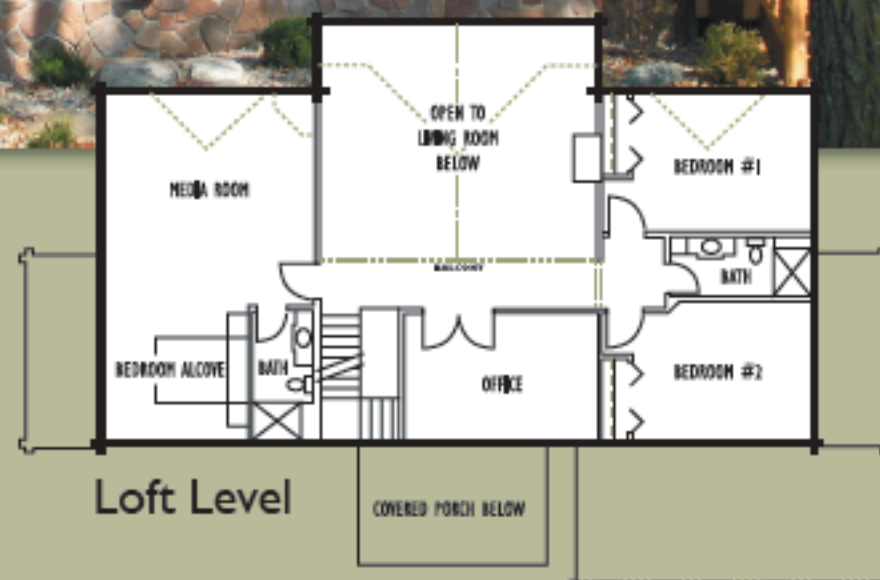


Lower Level



POTATO LAKE

Main:	2450
Loft:	1474
	<hr/> 3924
Screen Porch:	364
Garage:	750



PONDEROSA

Main:	1584
Lower Level:	1584

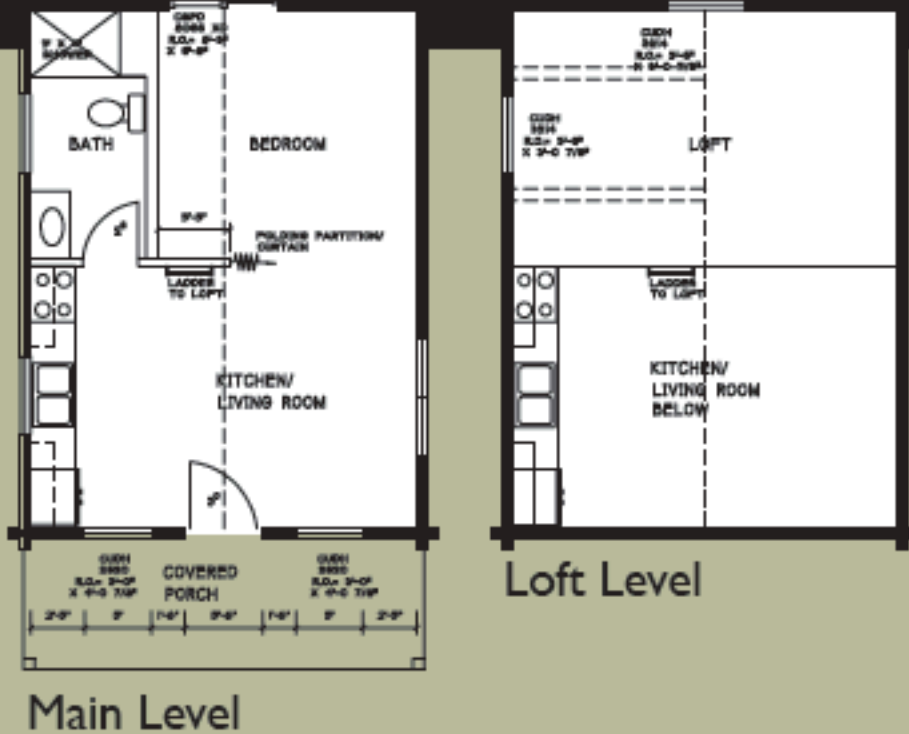
View this plan at our office in Walker



LAKE COTTAGE MODEL

Main: 432
Loft: 216
648

View this plan at our office in Walker



If You Prefer Our SOLID LOG HOME, You May Be Interested to Know:

1. Energy Efficiency

- The solid log sidewalls offer excellent resistance to the passage of heat
- Our unique 6" minimum log width has been analyzed by experts and they have determined the average insulation-value of our log sidewall is equivalent to R19

2. Minimal Maintenance

- The maintenance is basically limited to upholding the exterior preservative. Our standard product we use will generally last an average of 6 years and caulking should be replaced as needed

3. Variety of Log Packages – We can customize a package to meet your needs, some examples are:

- **Turnkey:** Ready to move into, includes labor and materials
- **Shell:** The exterior is finished, while the interior is ready for mechanical and finish-work. Materials Only Package or Labor & Material Package
- **Logs Only:** This simple package includes the logs, cut sheet, log insulation, and spikes. This package is available with just the materials or any specific amount of labor can be added

4. Settling & Shrinking

- After over 30 years, our experience has proven that our log homes settle very little. In fact, no more than stick built construction. We use a standard amount of allowance around windows and doors



Custom Homes To Meet Any Budget
SOLID LOG OR STICK BUILT

View Our Three Model Homes

Located 1 Mile North Of Walker On Hwy 371
Monday-Friday: 9am-4pm or by Appointment

We Welcome All Inquiries

Call today to start your plans
and get a free quote

218-547-2023

Log Homes Minnesota, Inc.
8313 State 371 NW
PO Box 1530
Walker, MN 56484

www.LogHomesMN.com
loghomes@eot.com

Fax: 218-547-1687
Contractor License No. BC007440
References Available

